

DIRECTOR OF ENGINEERING, (D.E.) F.C. McLEAN, C.B.E.

DEPUTY DIRECTOR OF ENGINEERING, (D.D.E.) M.J.L. PULLING, C.B.E.

ASSISTANT DIRECTOR OF ENGINEERING, (A.D.E.) D.B. WEIGALL

CHIEF ENGINEER, ADMINISTRATION, (C.E. ADMIN.) J.E.F. VOSS

CHIEF ENGINEER

EXTERNAL RELATIONS, (C.E.E.R.)

E.L.E. Pawley, O.B.E.

GENERAL

ASSISTANT TO D.E.
D.C. Birkinshaw, M.B.E.

HEAD of
DESIGNS DEPT.
(H.D.D.)
S.N. Watson

HEAD of
STUDIO PLANNING
AND
INSTALLATION DEPT.
(H.S.P.I.D.)
D.R. Morse

HEAD of
TRANSMITTER
PLANNING AND
INSTALLATION DEPT.
(H.T.P.I.D.)
D.E. Todd

HEAD of
RESEARCH DEPT.
(H.R.D.)
G.G. Gourlet

HEAD of
EQUIPMENT DEPT.
(H.E.D.)
E.C. Drewe, O.B.E.

HEAD of
BUILDING DEPT.
(H.B.D.)
R.A. Brown

HEAD of ENGINEERING
STAFF ADMINISTRATION
(H.E.S.A.)
G. Dunkerley

CHIEF ENGINEER,
TELEVISION
(C.E. TEL.)
T.H. Bridgewater, O.B.E.

CHIEF ENGINEER,
SOUND BROADCASTING
(C.E.S.B.)
A.P. Monson

CHIEF ENGINEER,
EXTERNAL BROADCASTING
(C.E.X.B.)
K.R. Starley, Ph.D.

CHIEF ENGINEER,
TRANSMITTERS
(C.E.T.)
W.E.C. Varley

CHIEF ENGINEER,
COMMUNICATIONS
(C.E.C.)
G. Stannard

SENIOR SUPERINTENDENT
ENGINEER, TELEVISION
(S.S.E.TEL.)
J. Redmond

SUPERINTENDENT
ENGINEER SOUND
BROADCASTING
(EQUIPMENT)
(S.E.S.B.
(Equipment))
F.W. Alexander, Ph.D.

SUPERINTENDENT
ENGINEER,
EXTERNAL
BROADCASTING
(S.E.X.B.)
E.A. Beaumont

SUPERINTENDENT
ENGINEER,
TRANSMITTERS
(I)
M.J. Crawt

SUPERINTENDENT
ENGINEER,
TRANSMITTERS
(II)
E. Bonong

SUPERINTENDENT ENGINEER,
TELEVISION STUDIOS and
OUTSIDE BROADCASTS
(S.E.TEL. S. & O.B.)
W.R. Fletcher

SUPERINTENDENT ENGINEER,
TELEVISION RECORDING
(S.E. TEL. REC.)
R.E. Meakin

SUPERINTENDENT TELEVISION
TECHNICAL OPERATIONS
(S. TEL. TECH. Ops.)
R. de B. McCullough

SUPERINTENDENT ENGINEER SOUND
BROADCASTING OPERATIONS
(S.E.S.B.
(Operations))
D.H. Cummings

ENGINEERING
ESTABLISHMENT OFFICER
(E.E.O.)
D.E. Creasey

HEAD of ENGINEERING
TRAINING DEPARTMENT
(H.E.T.D.)
H. Henderson

ENGINEERING RECRUITMENT
and ATTACHMENTS OFFICER
(Eng.R & A.O.)
J.D. Esler

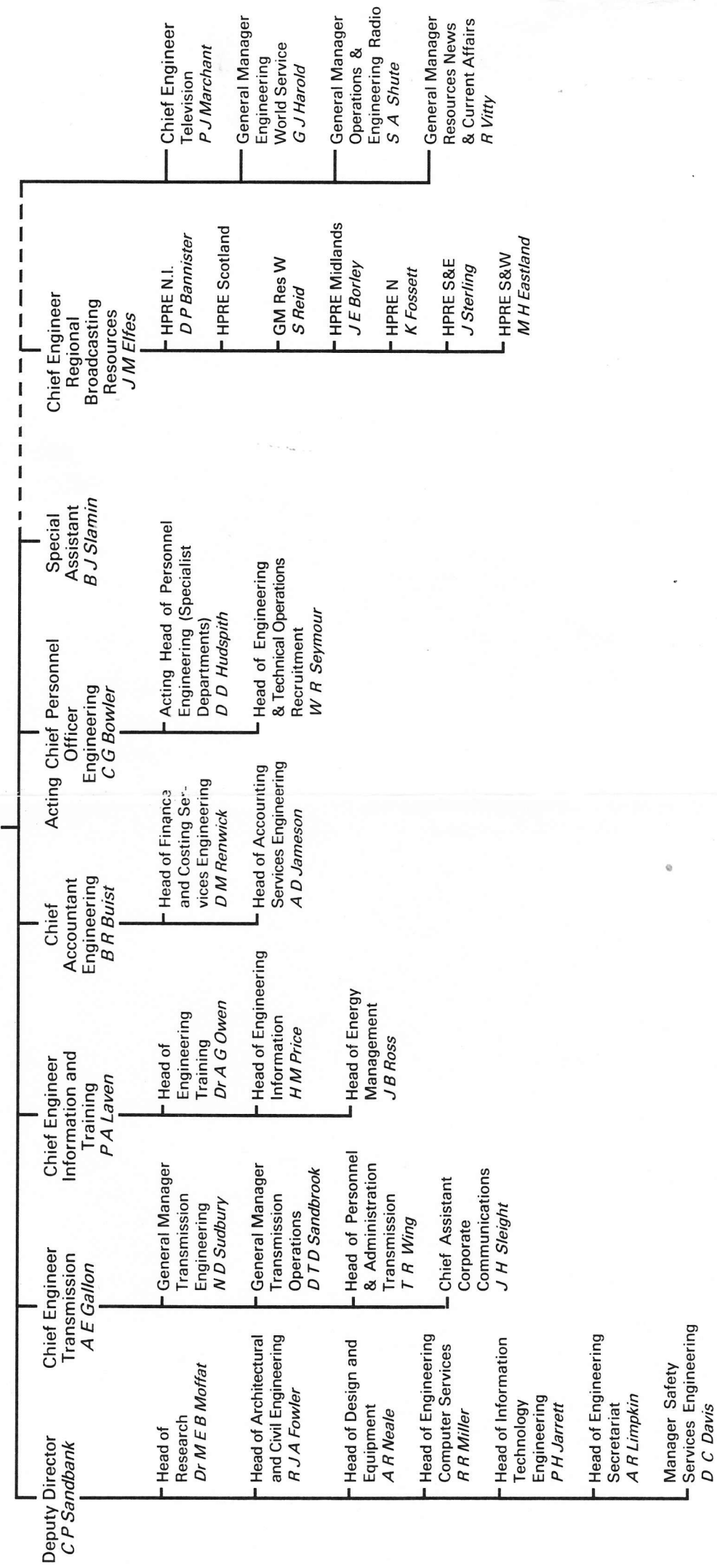
HEAD of
ENGINEERING
INFORMATION DEPT.
(H.E.I.D.)
L.W. Turner

HEAD of
ENGINEERING
SECRETARIAT
(H.E.S.)
J.A. Fitzgerald

ENGINEERING DIRECTORATE

NOVEMBER 1990

DIRECTOR OF ENGINEERING
C W Der.nay



ENGINEERING DIRECTORATE

JANUARY 1991

DIRECTOR OF ENGINEERING
C W Denny

