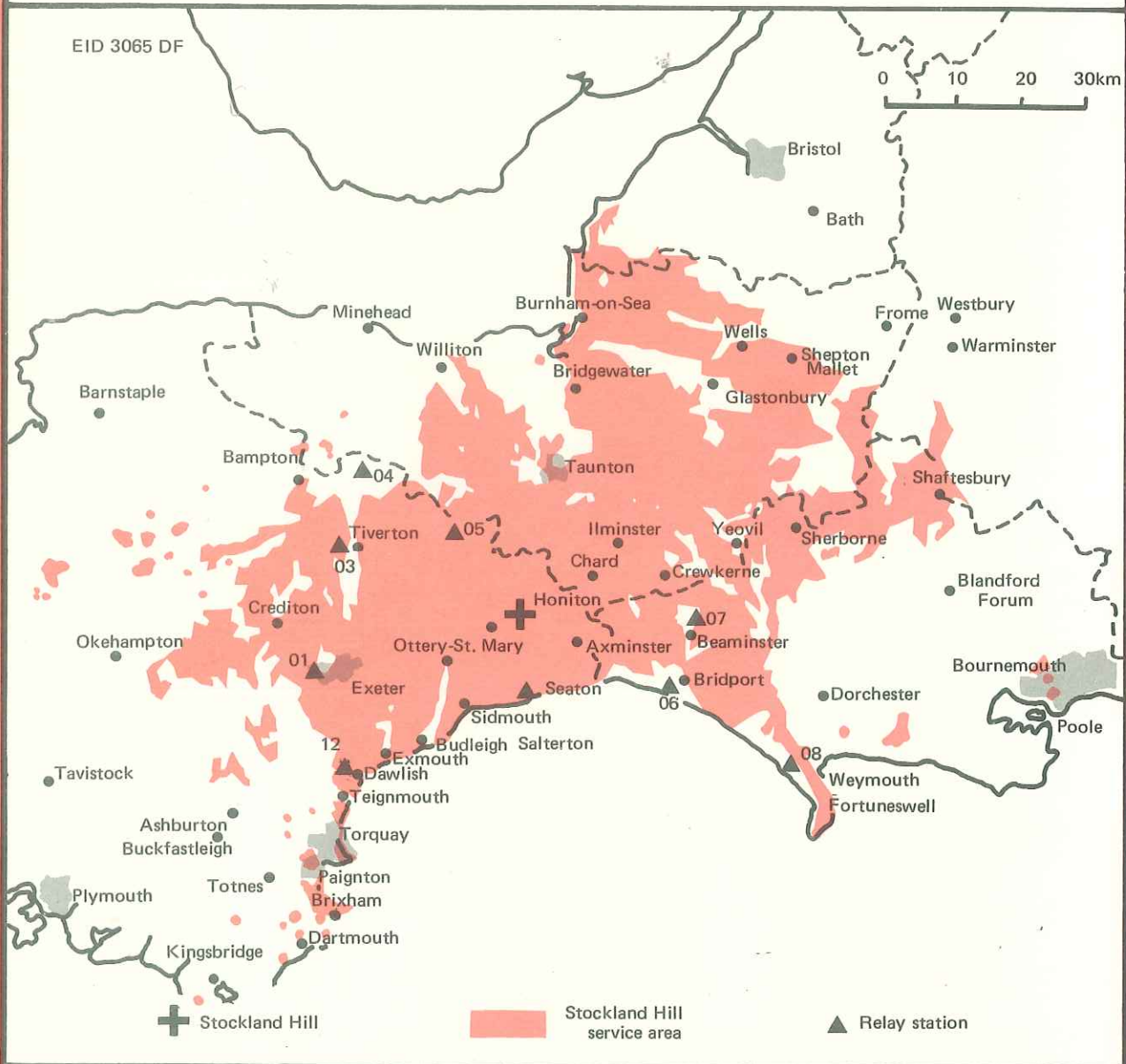




Stockland Hill UHF Television

BBC 1 (South West)	ch 33
BBC 2	ch 26
ITV	ch 23
Channel Four	ch 29
Maximum erp (vision)	250 kW
Polarisation	horizontal
Receiving aerial group	A
Mean height of transmitting aerial	234m agl, 463m aod
Transmitter site	nr. Honiton, Devon
National Grid Reference	ST 222014



The service area is indicated by the coloured part of the map, but the boundary should not be interpreted as a rigid limit. As the quality of reception on uhf can be very different at places only short distances apart, there are, inevitably, small pockets of poor reception which cannot be shown. Details of relay stations are shown overleaf in numerical order.

Stockland Hill Relays

		BBC 1	BBC 2	ITV	Ch 4	Maximum erp (vision) kW	Pol'n	Receiving aerial group	Mean ht of Tx aerial		NGR
		South West							m agl	m aod	
01	St. Thomas (Exeter)	51	44	41	47	0.25	V	B	48	147	SX 899922
02	Beer	55	62	59	65	0.0029	V	C/D	30	125	SY 230896
03	Tiverton	40	46	43	50	0.1	V	B	48	195	SS 939126
04	Bampton	39	49	45	52	0.03	V	B	46	267	SS 967237
05	Culm Valley	39	45	49	42	0.058	V	B	29	220	ST 108148
06	Bridport	51	44	41	47	0.1	V	B	48	112	SY 453915
07	Beaminster	55	62	59	65	0.02	V	C/D	34	202	ST 491025
08	Weymouth	40	46	43	50	2	V	B	51	115	SY 664779
12	Dawlish	55	62	59	65	0.007	V	C/D	18	126	SX 950772