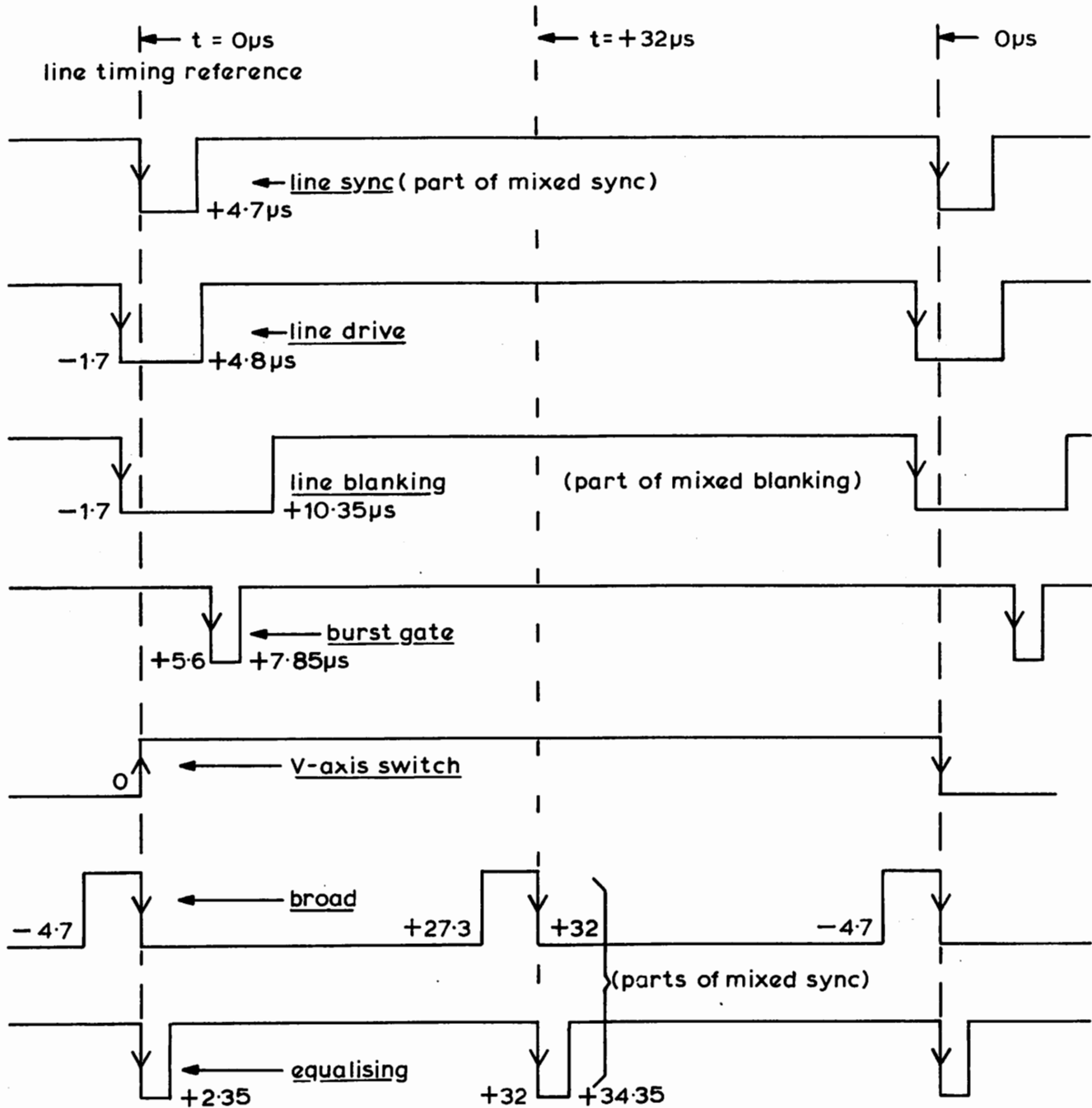
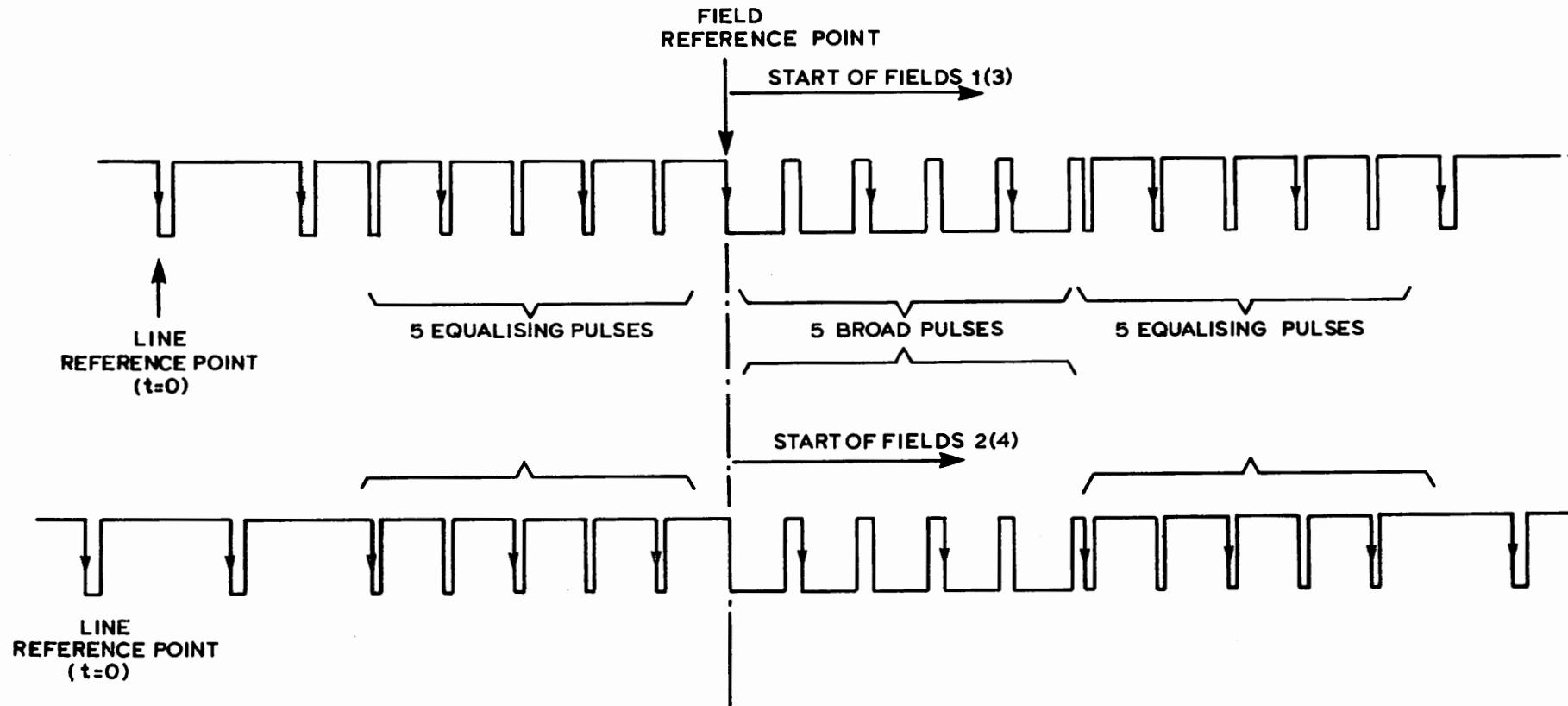


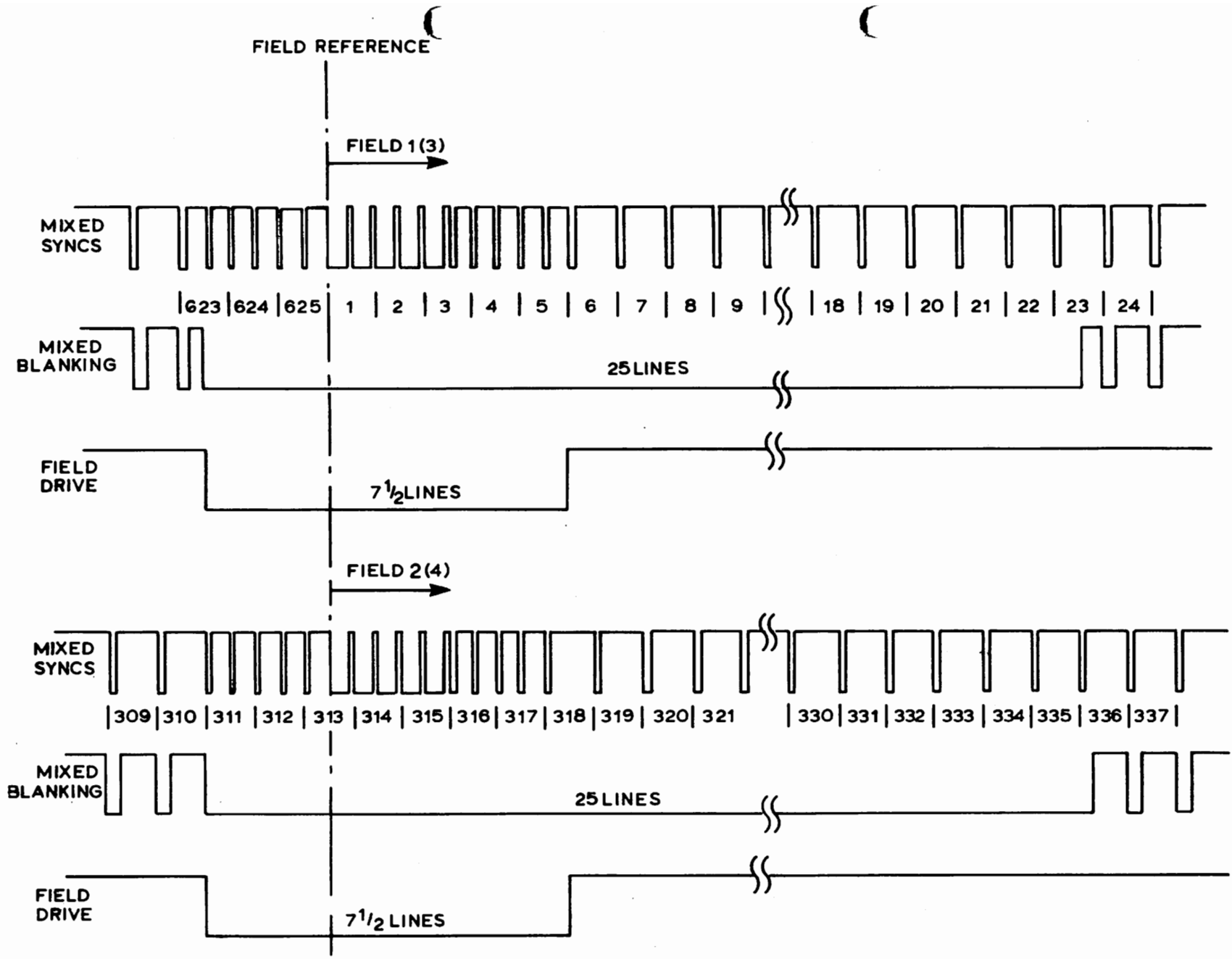
SYNC PULSE GENERATOR OUTPUT WAVEFORMS

Line Rate Waveforms

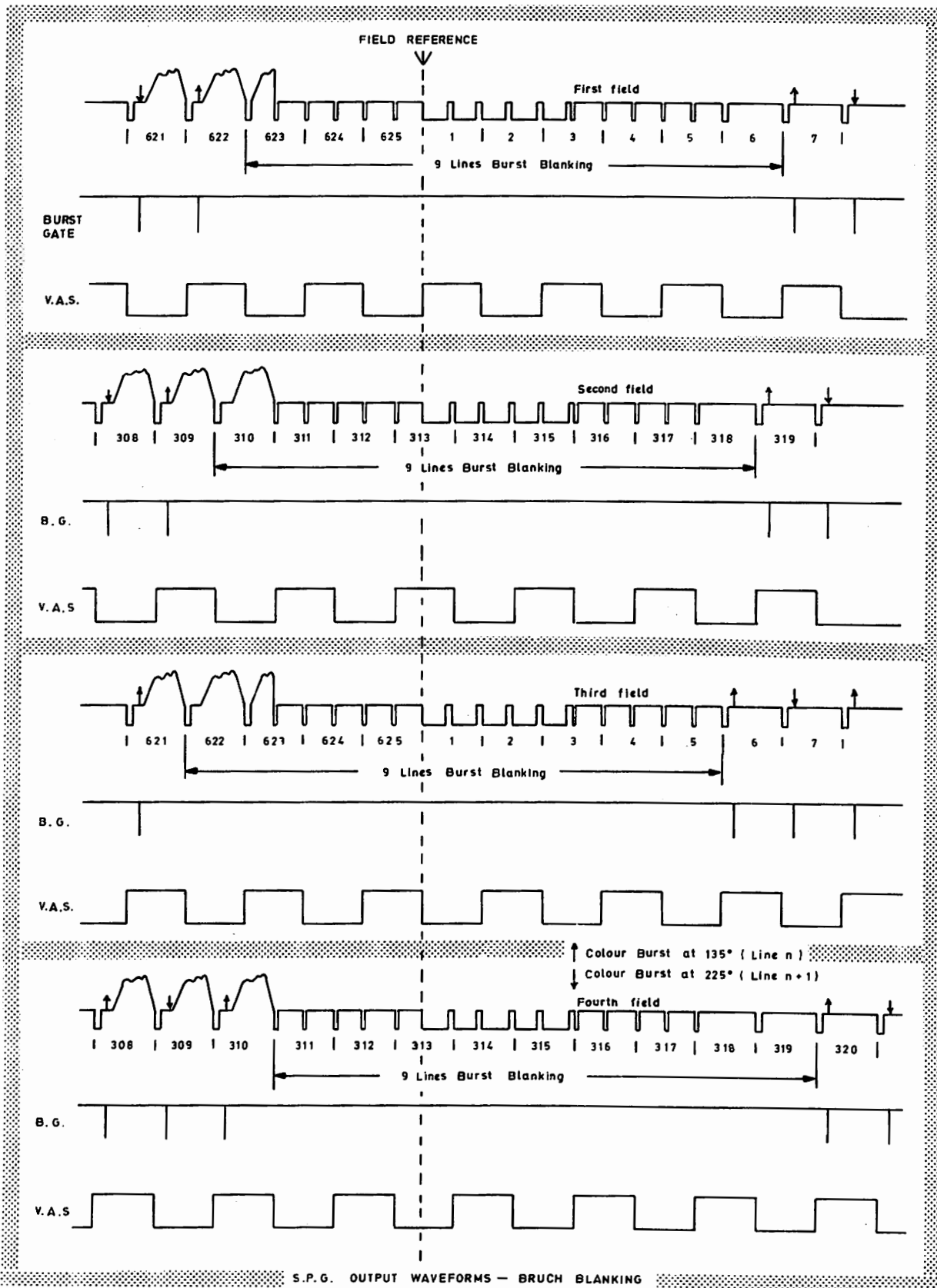


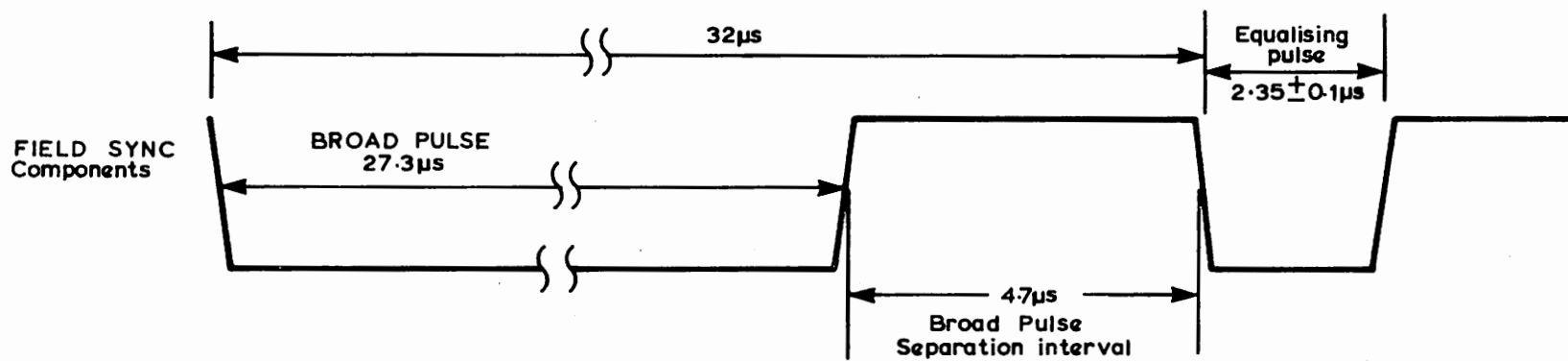
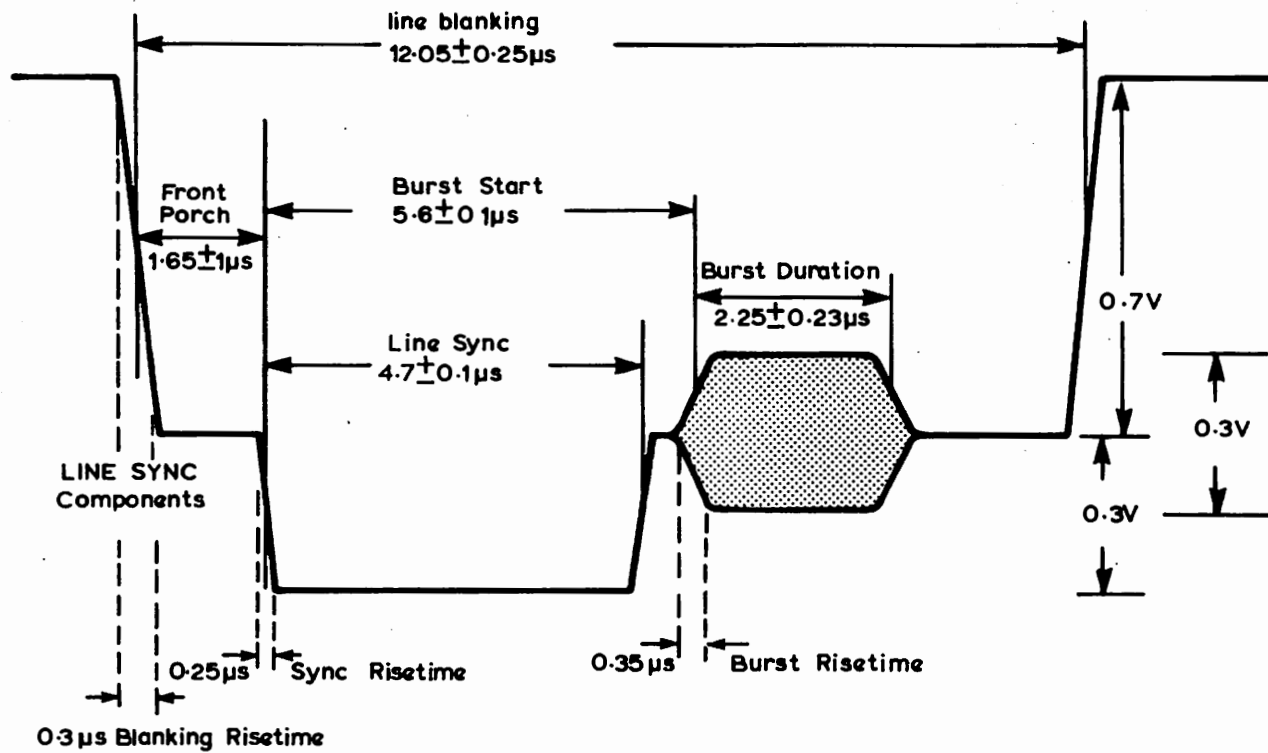


- 1) } indicates the edge used by a receiver line time-base (t=0)
- 2) FIELD ONE begins with the leading edge of 1st broad pulse (Field ref) coincident with t=0 (line reference)



SYNC PULSE GENERATOR OUTPUT WAVEFORMS





SYNC PULSE GENERATOR OUTPUT WAVEFORMS

TYPICAL SPG OUTPUT WAVEFORM SPECIFICATIONS

The following describe the outputs of the GE6L/535 (BBC) Television Waveform Generator.

AMPLITUDES Pulse Outputs - 2V pk-pk \pm 0.5dB into 75R

Except VAS - 1V pk-pk \pm 0.5dB into 75R

Risetimes 150 ns \pm 50ns (ie slower than logic signals, but not as slow as when they are finally used in the coded signal).

WAVEFORM TIMINGS

1. Mixed Syncs

Leading edge timing	0 (line time reference) or 32us
Line sync width	4.7us \pm 100ns
Equalising pulse width	2.35us \pm 100ns
Broad pulse separation	4.7us \pm 100ns

2. Mixed Blanking

Leading edge timing	-1.7us \pm 100ns
Line blanking width	12.05us \pm 100ns
Field blanking Width	25 lines and line blanking
Leading edge timing	-2.5 lines - 1.7uS \pm 100ns

3. Field Drive

Leading edge timing	-2.5 lines -1.7uS \pm 100ns
width	7.5 lines

4. Line Drive

Leading edge timing	1.7us \pm 100ns
width	6.5us \pm 100ns

5. Burst Gate

Bruch blanking sequence during field interval.

Timing	+5.6us \pm 100ns
Width	2.25us \pm 100ns

6. VAS

Period	2 lines
Timing	0 \pm 100ns, with positive going edge at start of line 1, field 1.